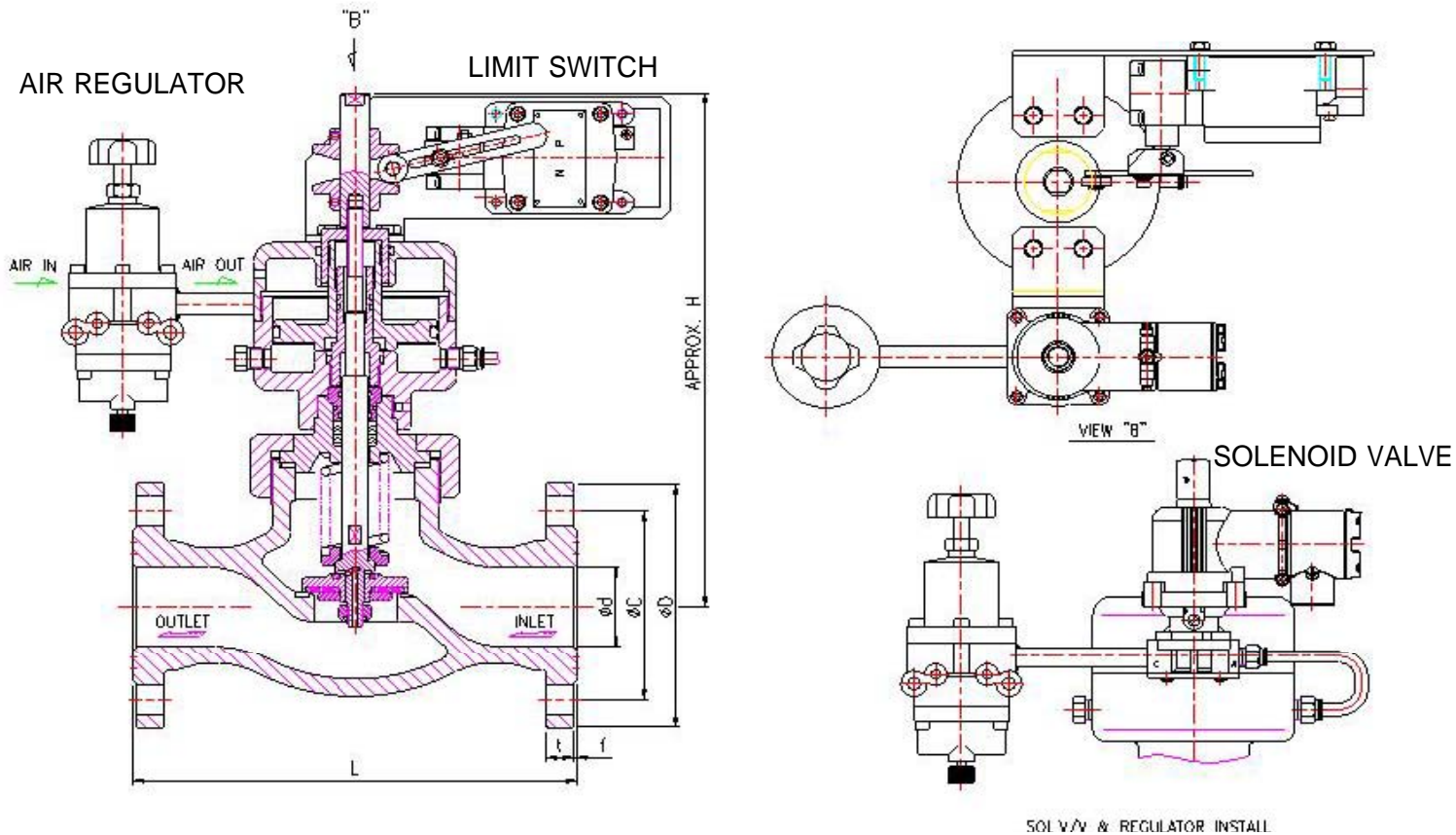


# ELECTRIC EMERGENCY SHUT-OFF VALVE

## MODEL NO. : WEEV-1000



SOLENOID VALVE & REGULATOR INSTALL

### ■ DIMENSION

SIZE	d	C	D	H	L
25A	25	90	125	260	203
50A	50	120	155	323	267
80A	80	160	200	367	318

### ■ SPECIFICATION

#### 1. GENERAL

- FLUID : NH<sub>3</sub>
- DESIGN PRESSURE : 2.18MPa
- HYDRO. TEST PRESSURE : 3.27MPa
- PNEU. TEST PRESSURE : 2.18MPa
- PNEU. CYLINDER WORKING PRESSURE : 0.29~0.49MPa
- FUSE METAL MELTING TEMP. : 75°C

#### 3. LIMIT SWITCH

- MAKER : Q-LIGHT / YAMARAKAE
- EXPLOSION PROOF : Ex dIIC T6
- INSULATION RESISTANCE : 100MΩ MIN. AT 500V DC

#### 2. SOLENOID VALVE

- MAKER : YOUNG TECH / KANEKO / ASCO
- EXPLOSION PROOF : Ex dIIC T6
- PRESSURE : 0~0.7MPa

#### 4. AIR REGULATOR

- MAKER : YOUNG TECH
- MAX. SUPPLY PRESSURE : 1.47MPa
- MAX. OUTPUT PRESSURE : 0.41MPa
- MIN. FILTERING SIZE : 5 MICRON

※ 주문제작품 (전자PART는 고객 요구사항 적용)